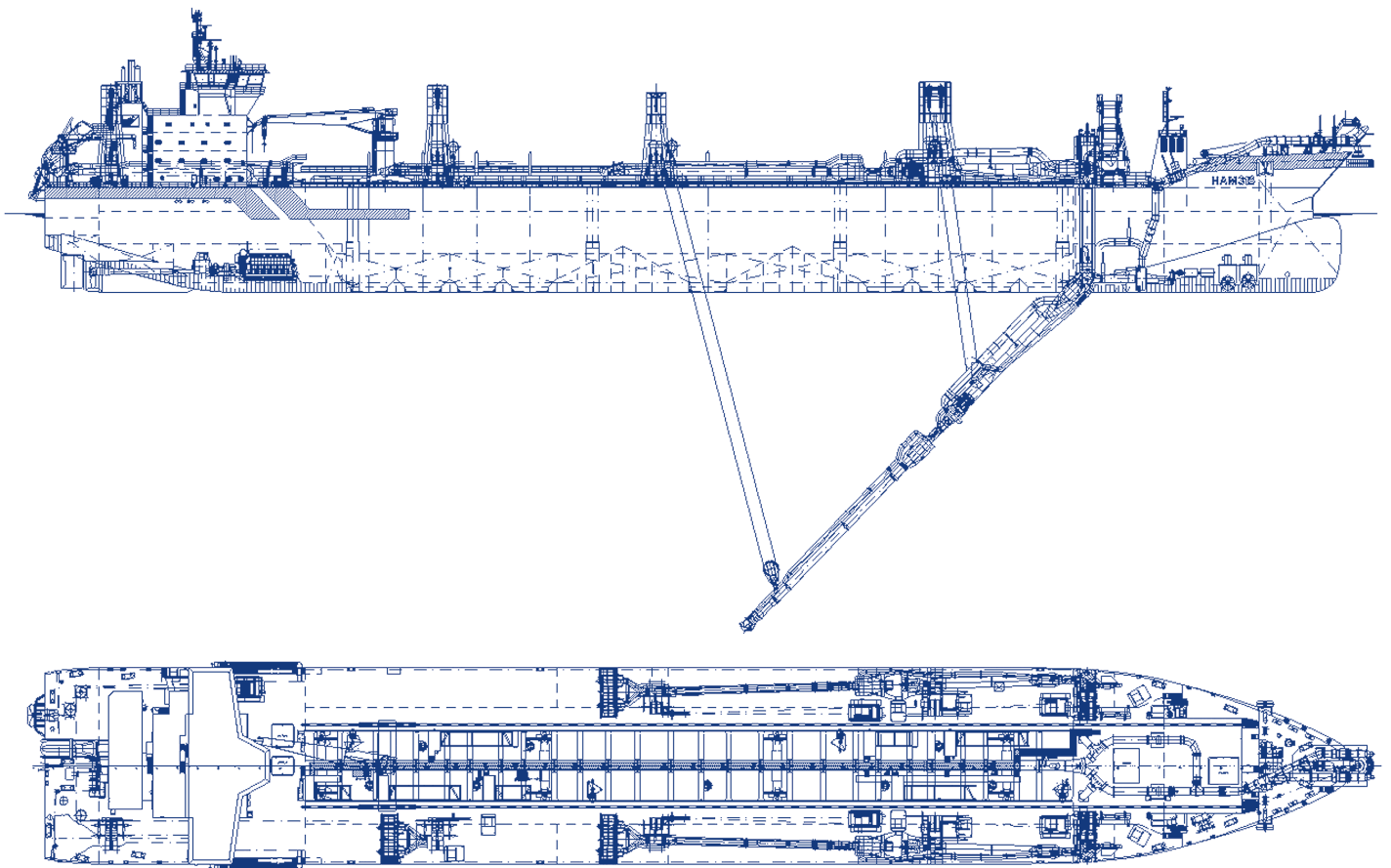




## Equipment

# Trailing suction hopper dredger HAM 318



## HAM 318

Name	HAM 318	
Type	Trailing suction hopper dredger	
Classification	Bureau Veritas, I ✕ Hull ✕ Mach ✕ AUT-UMS ✕ SYS-NEQ-1, hopper dredger, unrestricted navigation, dredging within 15 miles from shore or within 20 miles from port, dredging over 15 miles from shore with H.S. $\leq$ 3.5 m, dredging within 8 miles from shore, dredging over 8 miles from shore with H.S. $\leq$ 2.0 m	
Year of construction	2001	
Year of upgrading	2008	
Dimensions	Length overall	227.20 m
	Breadth overall	32.05 m
	Moulded depth	17.12 m
	Dredging draught	13.00 m (15 miles) and 13.55 m (8 miles)
Hopper capacity	37,293 m <sup>3</sup>	
Deadweight	61,071 tons	

Maximum dredging depth	70.0 m / 101.0 m
Suction pipes	2 x $\varnothing$ 1,200 mm
Discharge pipe	$\varnothing$ 1,100 mm
Speed loaded	15.5 kn
Propulsion	2 x 12,600 kW
Bow thrusters	2 x 1,500 kW
Bow jet	2,250 kW
Total power installed	28,636 kW
Inboard dredge pumps	2 x 2,750 kW
Submerged dredge pumps	2 x 2,500 kW
Jet pumps	2 x 2,150 kW

### Contact

**Van Oord**  
 PO Box 8574  
 3009 AN Rotterdam  
 The Netherlands  
**T** +31 88 8260000  
**F** +31 88 8265010  
**E** info@vanoord.com  
**I** www.vanoord.com